

i20 Vet

Color Doppler Ultrasound Scan System



Quality-Reliability-Innovation

Extensive clinical application, high efficiency full digital image management system, more convenient image storage and reading, flexible configuration, easy to carry, ergonomic design, improved use range.

Profile

- Laptop thin and light design, all digital color Doppler ultrasound host;
- 12.1" LCD high definition Display;
- Ultrasonic host operating system: Windows 7 operating system
- Standard keyboard and backlight key;
- 3200mAh rechargeable lithium battery;
- **Optional 3D Software .**

Main Parameters

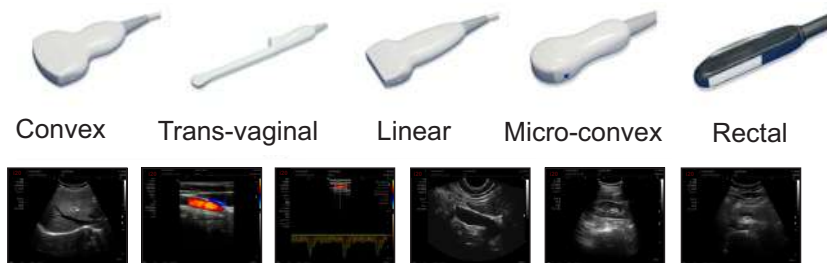
- Display modes: B, B/B, 4B, B+M, CFM, B+CFM, PDI, B+PDI, PW;
- Application mode: Canine, Feline, Ovine, Equine, Bovine, Suidae;
- Gray scale: 256 levels;
- 5 levels image optimization;
- THI imaging technology;
- Rich image processing technology, for instance frames average, view angle, edge enhance, Gamma, etc
- Display penetration depth 1-400mm;
- Dynamic range: 80-280dB adjustable;
- Preset the parameter depend on scanning organ;
- IMT automatic measurement and display results;
- 15 kinds of pseudo color;
- Support guideline of biopsy puncture;
- Built-in 120G solid state drive, make the storage safer and more reliable;
- Support frequency conversion range: 2MHz-12MHz(depend on probe type);
- Built-in editable report page;
- Gain control: 8 segments TGC and overall gain can be adjusted respectively;
- Focus position: dynamic electron focusing;



Interface ports

- 2 activated probe connector;
- Port: HDMI, VGA, DICOM, USB, LINE OUT.

Optional Probes



AV VET SUPPLIES CORP

Address: 3850 Bird Rd # 1001
Miami Florida 33146